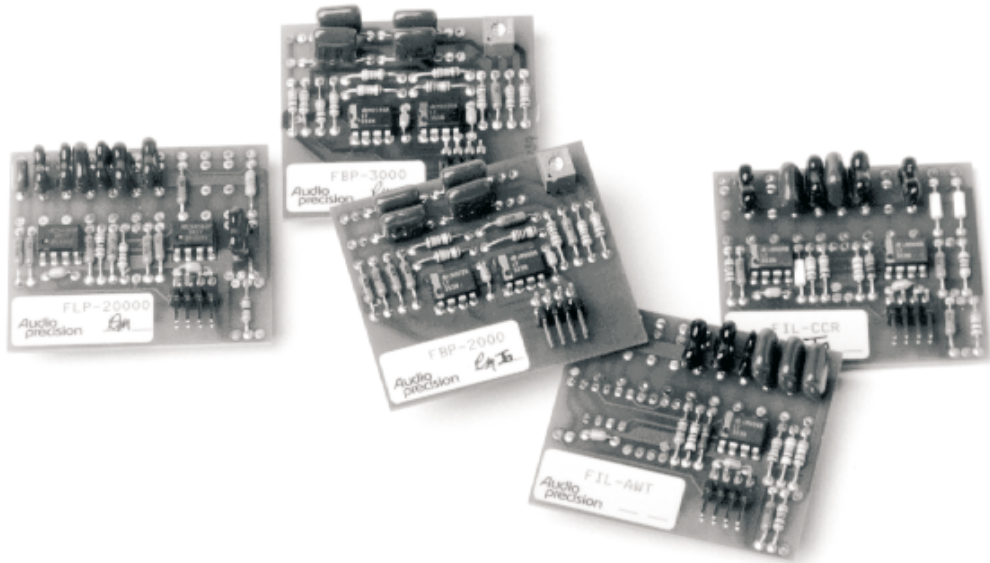


System Two Filter Installation



Introduction

System Two includes seven sockets for optional filters. Although normally factory-installed, these optional filters may be changed or added in the field, by following the procedure below.

Many different filters are available from Audio Precision, as described in the Specifications Booklet and other literature. These filters are common for all Audio Precision products, and can be installed in any positions in System Two. Also available is a blank circuit board to allow user design and construction of custom filters. For external user-supplied filters, a kit is available that includes an interface board with leads to connectors for an external filter. See separate documentation for this product.

Filter Constraints

In System Two, any filter can be installed in any position. However, by convention, the CCIR filter usually goes in position #1, and the A-weighting filter usually goes in position #2.

Installation Procedure

Audio precision		SYSTEM TWO CONFIGURATION	
SYS 2022 System Two Analog Only	O P T I O N S	IMD <input type="checkbox"/>	F I L T E R S
SYS 2222 System Two Analog + DSP		W&F <input type="checkbox"/>	
SYS 2322 System Two Dual Domain		BUR <input type="checkbox"/>	
SYS 2300 System Two Digital Only		EURZ <input type="checkbox"/>	
	SPCL <input type="checkbox"/>		
	Date of Manufacture		



Audio Precision
 5750 SW Arctic Drive
 Beaverton OR 97005
 Tel: 503-627-0832 Fax: 503-641-8906
 US toll free: 1-800-231-7350
 email: info@audioprecision.com
 web: audioprecision.com

WARNING!

Hazardous voltages exist inside System Two whenever it is plugged into an ac power source. Unplug the power cord from the instrument before proceeding.

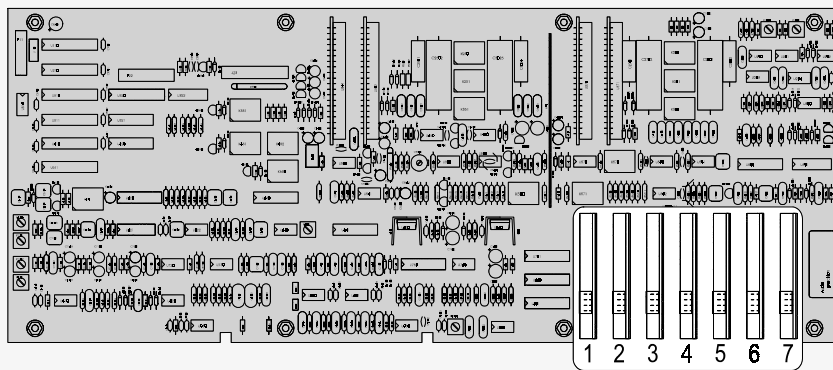
Before proceeding, note the tag on the rear of the instrument (shown above). This tag lists the filters that are already installed, and it should be updated if the filters are changed or added. Also note that the filter positions are numbered starting from the rear of the instrument. On System Two, the filter positions are marked on the circuit board.

1. Remove the handle or the rackmounting brackets (if present) from the side(s) of the instrument.
2. Turn the instrument upside down, remove the ten screws in the System Two bottom cover, and lift off the cover.
3. Refer to The figure below to locate the filter positions.

4. Remove the two screws securing the filter hold-down bracket.
5. Install the filter in the desired position. Make sure that all eight pins engage the socket properly.
6. Replace the filter hold-down bracket removed in step 4.
7. Change the tag on the rear of the instrument to reflect the new filter installation.
8. Reinstall the bottom cover and test the instrument.

This completes the installation.

System Two bottom view with cover removed



System Two bottom view showing filter locations